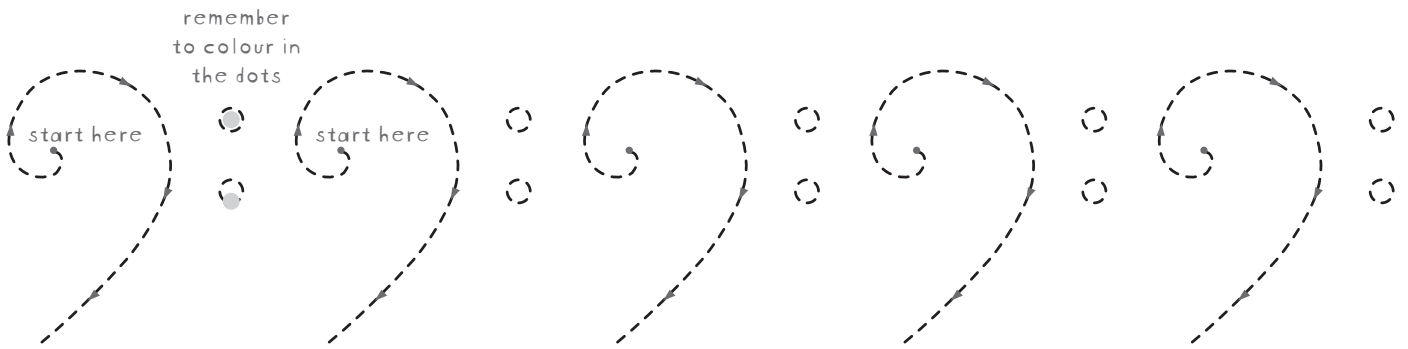


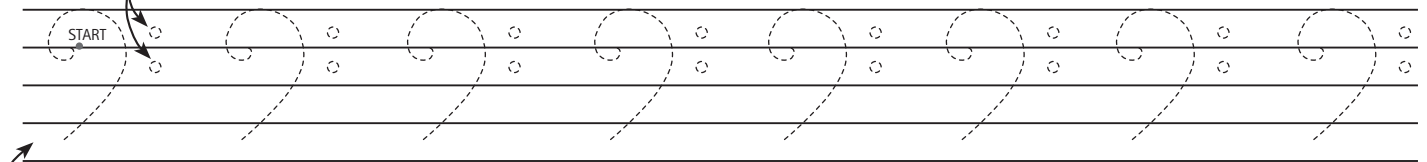
Drawing Bass Clefs



Drawing Bass Clefs on a staff or staff.

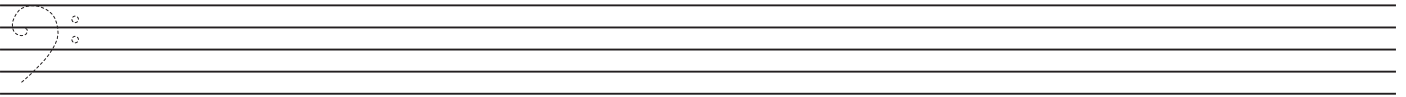
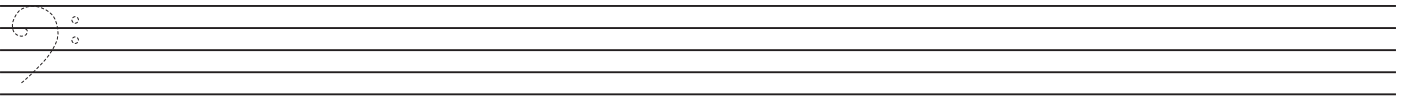
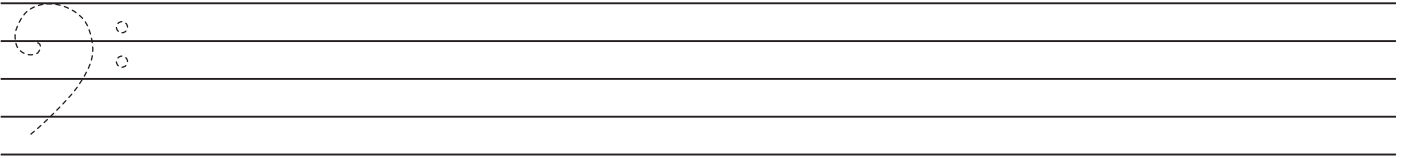
1. Curl up to the top line.

3. Place 2 dots in the 3rd + 4th spaces, remember to colour them in.



2. Curve around to end here in the bottom space.

Draw 10 or more Bass Clefs on each staff.



Draw 10 or more Treble Clefs on the staff below.

